

Cisco Local Academy

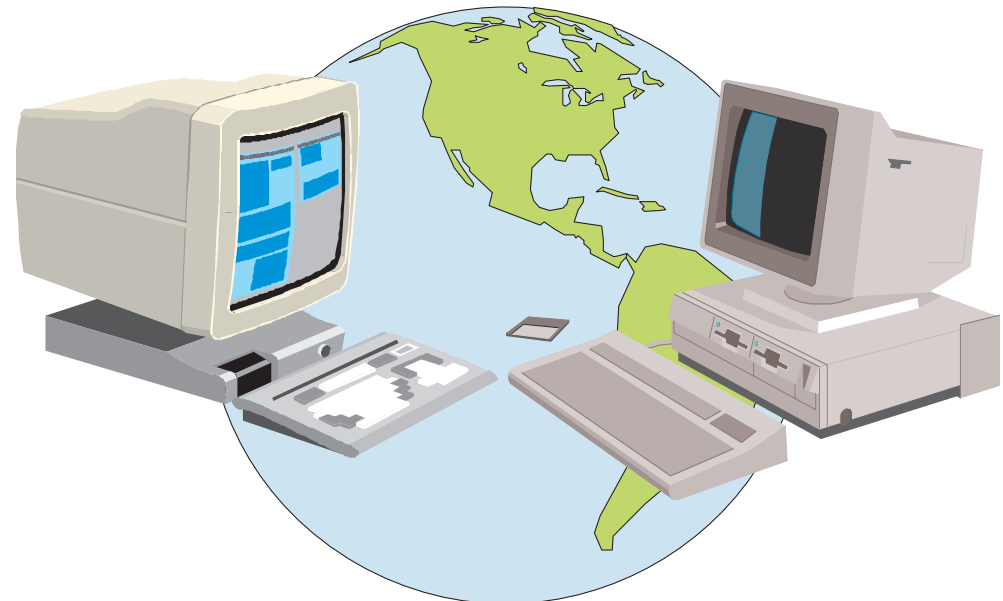
| <u>Sign up for:</u> | <u>Hours</u> | <u>Price</u> |
|---------------------------------------|---------------|---------------|
| <input type="checkbox"/> Module 1 | 72 | \$1850 |
| <input type="checkbox"/> Module 2 | 64 | \$945 |
| <input type="checkbox"/> Module 3 & 4 | 64 | \$1850 |
| | TOTAL: | \$4645 |

For specific dates and times of class, call (843) 921-6922.

SALLIE MAE LOANS available for those who qualify.

Northeastern Technical College

CISCO TRAINING CENTER



Tuition payment should be made at registration. Some classes are limited in size and enrollment is on a first pay, first serve basis. Registration deadline is 10 business days prior to class beginning where indicated by a (*). After registration deadline, a \$10 late fee will be charged. Refund policy: 100% refunds made on class cancellation; other refunds subject to policies of the college. Withdrawals must be made by calling Continuing Education. The college reserves the right to cancel classes due to insufficient enrollment. Notice of Non-Discrimination: Northeastern Technical College does not discriminate in admissions or employment on the basis of race, color, national origin, sex, disability, or age in its programs and activities. For inquiries on nondiscrimination policies, contact: Director of Personnel, PO Drawer 1007, Cheraw SC 29520, or call (843) 921-6900.

Division of Continuing Education
843) 921-6922 • 1-800-921-7399
www.netc.edu

CISCO LOCAL ACADEMY

You'll learn how to use the Cisco Internetwork Operating System software, complete a login command for the router and monitor and configure routers through hands-on training. These sessions will cover troubleshooting, RIP routing, constructing access control lists, TFTP configuration and IPX routing. This course will help prepare you for the Cisco Certified Network Associate (CCNA) certification test.

Who Should Attend?

This workshop is a must for anyone involved in connecting and supporting multiprotocol networks using Cisco routers:

- ◆ **Users of Cisco Routers**
- ◆ **Enterprise Network Administrators**
- ◆ **WAN Administrators**
- ◆ **Internet Service Providers**
- ◆ **Remote WAN/LAN Administrators**
- ◆ **Network Specialists**
- ◆ **Network Technicians**

The Cisco Network Academies program consists of four modules. The program is designed to teach students the skills needed to design, build and maintain small to medium-size networks. This provides them with the opportunity to enter the workforce and/or further their education and training in the computer networking field.

Module 1:

Functions of ISO/OSI Reference Model
Differences Between Data Link & Network Addresses
Function for MAC Address
OSI Network Layer Internetworking Functions
Conversion Step of Data Encapsulation
Classes of IP Addresses
Functions of TCP/IP Network-Layer Protocols

Module 2:

Router Elements (RAM, ROM, CDP, show)
Connection-oriented Network, Connectionless Network Service
Flow Control Methods Used in Networking
TCP/IP Transport-Layer Products
ICMP Functions and Cisco IOS Software Commands
Load Cisco Software From: Flash Memory, TFTP Server or ROM
Backup, Upgrade and Load Cisco IOS Software Image
Configure and Verify IP Addresses
Add RIP & IGRP Routing Protocol to Configuration
Configure Standard and Extended Access Lists to Filter IP Traffic

Module 3:

IPX Address and Encapsulation Types
Configure IPX Access Lists and SAP Filters to Control Novell Traffic
Enable Novell IPX Protocol and Configure Interfaces
LAN Segmentation Using Bridges, Routers and Switches
Full- and Half-Duplex Ethernet Networks
Fast Ethernet
Cut-Through and Store-and-Forward LAN Switching
Operation of Spanning Tree Protocol
Virtual LAN's

Module 4:

WAN Services: LAPB, Frame Relay, ISDN/LAPD, HDLC, PPP, and DDR
List Commands to Configure Frame Relay LMI, Maps, and Subinterfaces
List Commands to Monitor Frame Relay Operation in the Router
PPP Operations to Encapsulate WAN Data on Routers
ISDN Protocols, Function Groups, Reference Points, and Channels
Cisco's Implementation of ISDN BRI

Successfully passing certification exam=

Cisco Certified Network Associate (CCNA)

NETC